



DIGITAL ALPS CONFERENCE

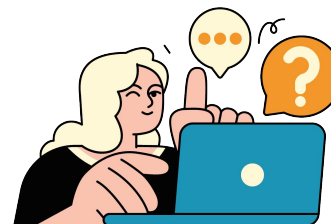
digitalalps.eu



How can access to learning be facilitated in rural mountain areas?

Presentation ADRETS

5 October 2023



Speaker : Noémie Lechat - Project Manager ADRETS
adrets@adrets-asso.fr



How can access to learning be facilitated in rural mountain areas?

ADRETS

ASSOCIATION FOR THE NETWORKED DEVELOPMENT OF
TERRITORIES AND SERVICES

Who are we ?



Association founded 23 years ago with the aim of supporting local and regional stakeholders in the development of the accessibility of their SGI's and developing innovative actions to create new services adapted to local challenges.

Projet “Lieux apprenants et FOAD”

(Co-learning places and digital learning project)

*Supported by the Innovation Fund for the Professional Learning - Region Sud Provence-Alpes-Côte-d’Azur
2020 - 2022*

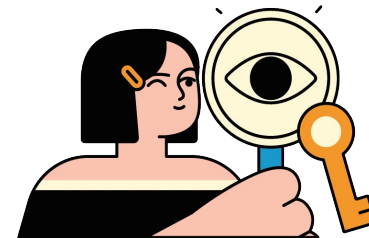


A shared analysis :

- **Difficulty in accessing professional training** in remote areas with problems of mobility and lack of public transport
- Many young people leaving the area to study elsewhere
- Training programs not always adapted to local realities
- Necessity of **keeping the population in the area** and developing its **attractiveness**

Opportunities :

- **E-learning**, but digital illiteracy (digital skills, equipment, etc.)
- Existing facilities “**Hub France services**”, “**Connected Campus**” that can be transformed into **co-learning places**



How can access to learning be facilitated in rural mountain areas?

“Lieux apprenants et FOAD” Project (2020- 2022)



KEY ACTIONS

- Creation of co-learning spaces in 3 test areas (very rural) - Service design approach
- Helping trainers to change their approach (e-learning)
- Supporting learners in their use of digital tools for e-learning training
- Creating a multidisciplinary community around this topic

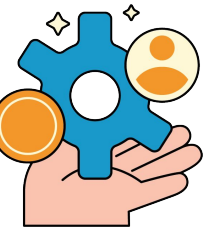


Tools developed to support trainers and e-learners



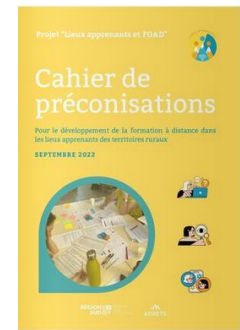
Transformation of the co-learning space “France Services du Dévoluy” (Département Hautes-Alpes, France)

How can access to learning be facilitated in rural mountain areas?

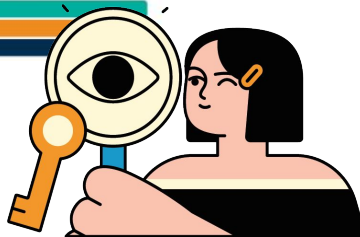


Conclusion / Perspectives

- Co-learning places are relevant, but need to be clearly identified by both learners and local stakeholders (publicity for those new services)
- The need to place people at the centre of their training pathways, their reality ("slow-training")
- Support the development of these places and develop distance learning opportunities, while making them visible (new practices since the pandemic, but still need to be developed)
- Provide resources to run these co-learning places and the community of learners



All the perspectives available in Recommendations Handbook



More about the project (description, resources, ..)

[Click here!](#)

